

# City of Austin Population and Households by ZIP Code

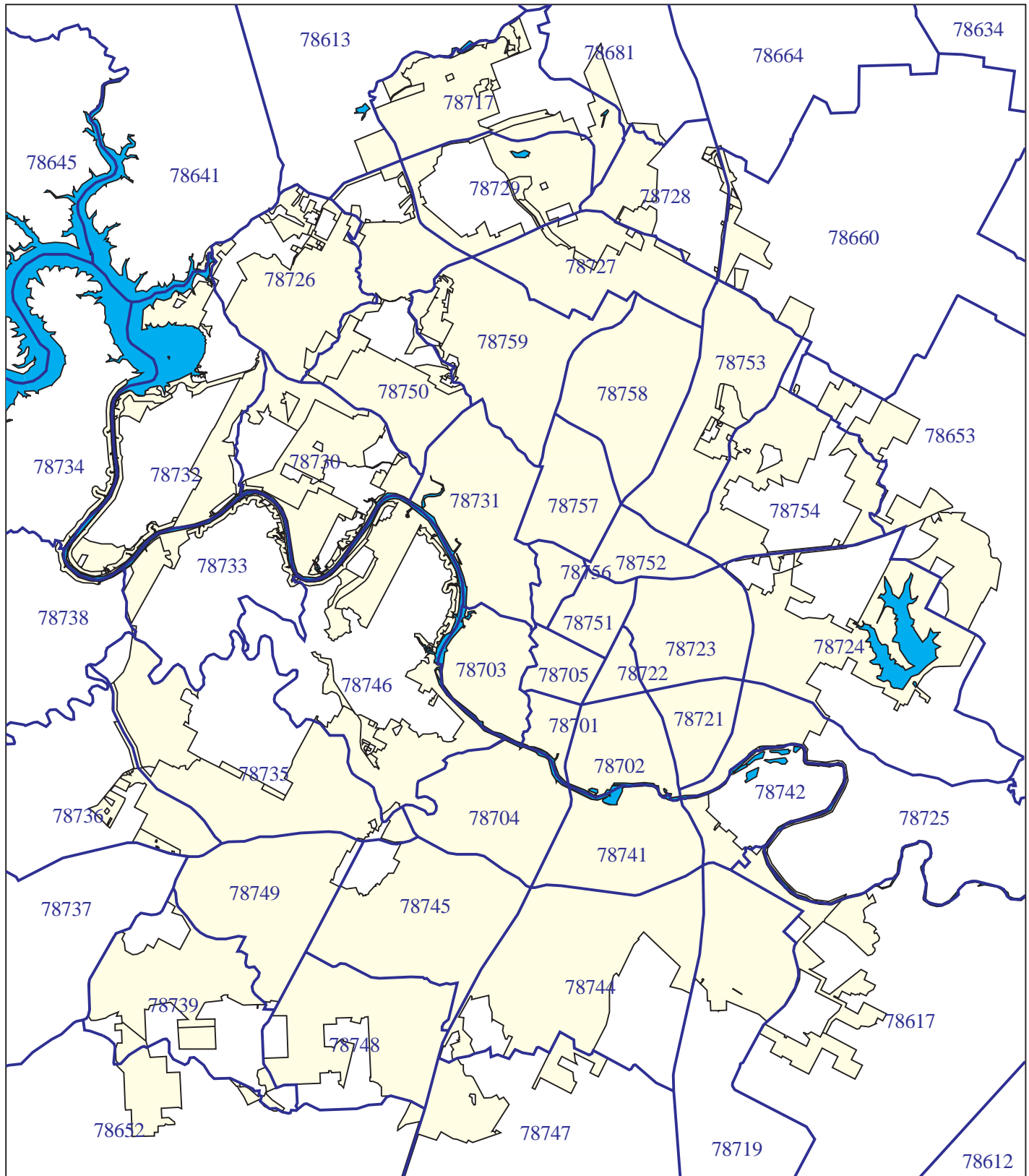
## Base Year 2000 and 2010 Forecast

ZIP Code	Census 2000		2005		2010		Absolute Population Growth 00--05	Absolute Population Growth 05--10	Absolute Population Growth 00--10	Rank in Absolute Population Growth 00--10
	Population	Households	Population	Households	Population	Households				
78613	379	130	395	136	421	144	16	26	42	45
78617	5,007	1,041	6,033	2,085	6,957	2,405	1,026	925	1,950	16
78652	6	2	6	2	756	252	0	750	750	31
78653	68	19	558	156	2,018	564	490	1,460	1,950	17
78660	26	8	186	57	260	80	160	74	234	38
78681	0	0	0	0	0	0	0	0	0	47
78701	3,855	1,811	4,108	2,773	4,452	3,005	253	343	597	33
78702	22,489	7,222	22,705	7,472	23,266	7,657	216	561	777	27
78703	19,505	9,548	19,608	9,834	19,782	9,921	103	173	277	37
78704	43,117	20,562	44,078	21,650	44,904	22,055	961	826	1,787	18
78705	25,777	9,410	26,075	14,786	26,799	15,196	298	724	1,022	23
78717	2,103	861	4,532	1,855	8,389	3,435	2,429	3,857	6,286	3
78719	7	2	7	2	207	59	0	200	200	41
78721	10,124	3,099	10,430	3,224	10,891	3,367	306	462	767	28
78722	6,260	2,848	6,276	2,956	6,402	3,015	16	126	142	42
78723	30,259	10,487	30,342	10,589	31,022	10,827	83	680	763	29
78724	10,199	2,762	10,991	2,984	11,589	3,146	792	598	1,390	20
78725	1,708	212	1,713	504	1,797	529	5	84	89	43
78726	4,724	1,544	8,035	2,626	8,794	2,874	3,311	759	4,070	9
78727	23,131	9,877	25,198	10,814	25,761	11,056	2,067	563	2,630	13
78728	3	1	3	1	503	168	0	500	500	34
78729	7,749	3,519	8,215	3,813	10,456	4,853	466	2,241	2,707	12
78730	2,495	1,134	2,714	1,234	3,222	1,464	219	507	727	32
78731	25,926	12,649	26,171	13,009	26,681	13,262	245	510	755	30
78732	930	435	1,062	497	1,236	578	132	174	306	36
78733	526	213	554	224	599	243	28	45	73	44
78734	231	91	247	97	273	107	16	26	42	46
78735	7,771	3,371	8,898	3,907	11,039	4,846	1,127	2,140	3,268	11
78736	4,010	1,535	4,397	1,685	5,445	2,086	387	1,048	1,435	19
78738	0	0	0	0	0	0	0	0	0	48
78739	5,940	1,820	7,658	2,346	10,568	3,238	1,718	2,910	4,628	8
78741	40,661	17,080	42,341	17,835	44,405	18,705	1,680	2,064	3,744	10
78742	1,626	531	1,697	554	1,858	607	71	161	232	39
78744	32,551	9,590	37,724	11,133	39,100	11,539	5,173	1,375	6,549	2
78745	52,304	20,228	54,309	21,222	54,847	21,433	2,005	539	2,543	14
78746	11,930	5,110	12,262	5,299	12,748	5,509	332	486	818	25
78747	579	175	2,024	617	5,660	1,726	1,445	3,636	5,081	7
78748	21,054	7,718	26,477	9,745	31,308	11,523	5,423	4,831	10,254	1
78749	28,139	10,575	30,770	11,644	33,632	12,727	2,631	2,861	5,493	4
78750	15,303	5,948	15,884	6,236	16,426	6,448	581	542	1,123	22
78751	14,167	7,394	14,570	7,830	15,410	8,282	403	840	1,243	21
78752	17,733	6,678	17,844	6,812	18,521	7,071	111	677	788	26
78753	38,822	14,745	40,163	15,341	43,975	16,797	1,341	3,812	5,153	5
78754	2,845	1,300	4,362	2,002	7,954	3,650	1,517	3,592	5,109	6
78756	7,983	4,410	8,056	4,473	8,292	4,604	73	236	309	35
78757	23,129	10,600	23,156	10,709	23,350	10,799	27	194	221	40
78758	45,893	19,193	46,125	19,526	46,715	19,776	232	590	822	24
78759	37,518	18,161	38,330	18,647	39,892	19,408	812	1,563	2,374	15
<b>Totals</b>	<b>656,562</b>	<b>265,649</b>	<b>697,293</b>	<b>290,946</b>	<b>748,582</b>	<b>311,035</b>	<b>40,731</b>	<b>51,289</b>	<b>92,020</b>	


### NOTES:

- 1) All data items represent only the portion of a ZIP Code that falls within the City of Austin.
- 2) Please refer to the Methodology page for a detailed explanation of the underlying data sources and projection techniques used in this forecast.

Produced by: Ryan Robinson, City Demographer, Department of Planning, City of Austin, October 2004.



# ZIP Codes and Austin City Limits

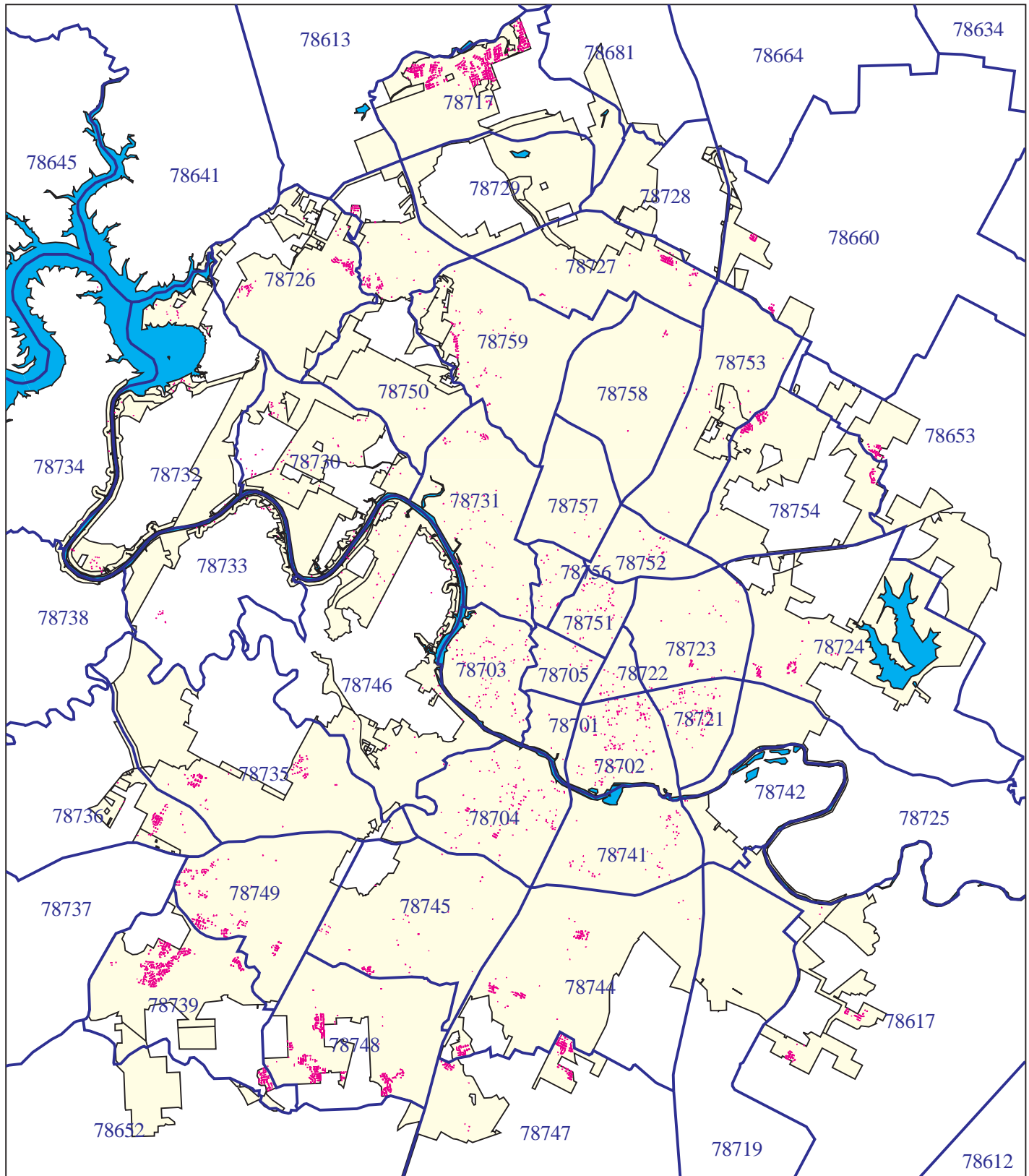
 City of Austin  
Jurisdiction  
as of 10.1.2004



# City of Austin Housing Starts by ZIP Code

## January 1, 2000 through October 1, 2004

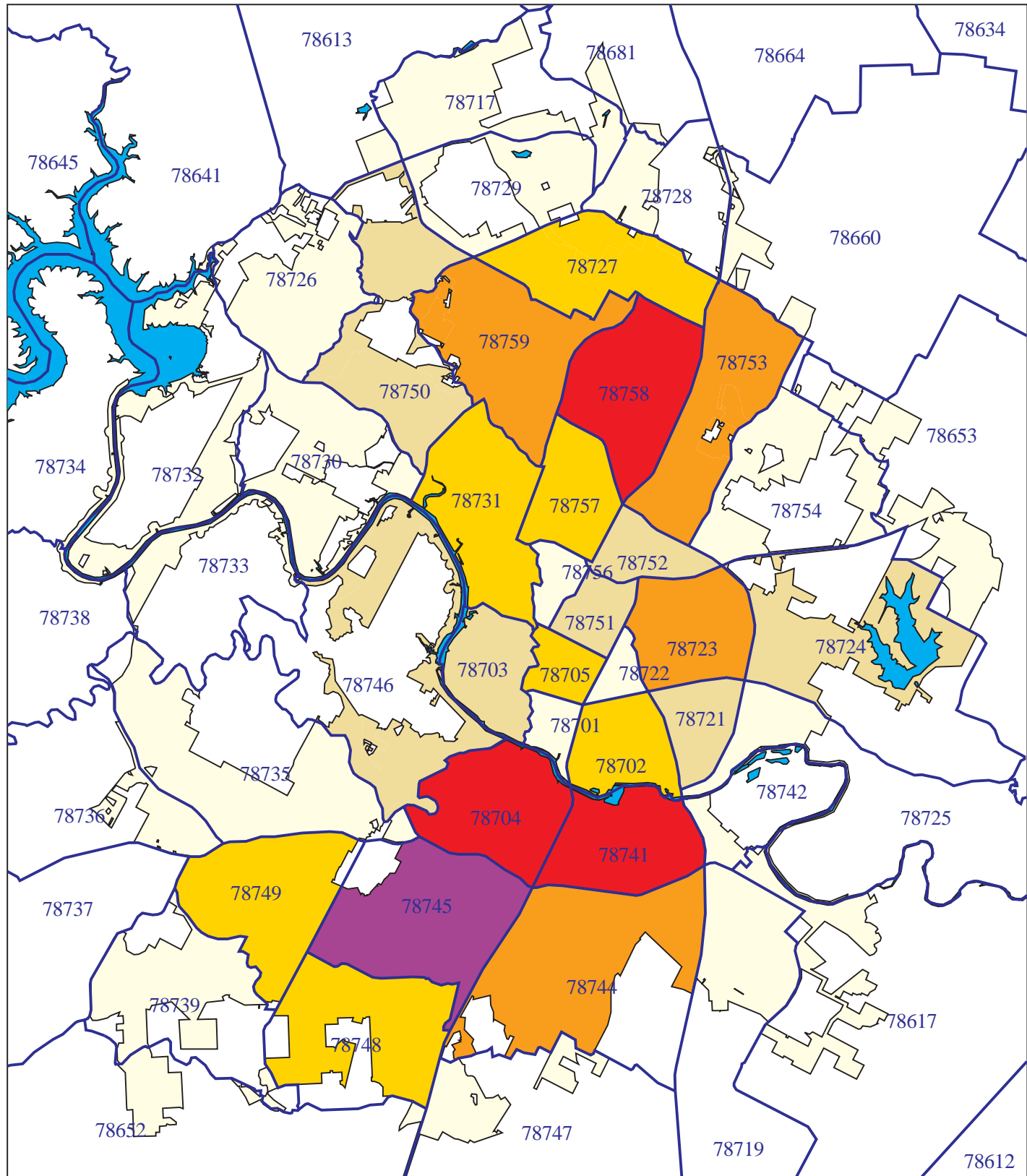
ZIP Code	Single Family Units	Duplex/Tri- & Four-plex Units	Multifamily Units	Demolished Units
78613	12	0	0	0
78617	392	0	0	2
78652	0	0	0	0
78653	215	0	0	0
78660	80	2	0	0
78681	0	0	0	0
78701	4	1	222	2
78702	259	47	239	102
78703	171	29	102	91
78704	369	127	681	84
78705	26	53	386	34
78717	1,802	0	0	0
78719	0	0	0	0
78721	181	36	535	24
78722	23	6	8	19
78723	75	16	12	8
78724	508	9	0	1
78725	5	0	0	1
78726	451	0	1,676	0
78727	518	253	1,770	6
78728	0	0	0	0
78729	26	64	552	0
78730	167	0	146	3
78731	184	32	0	24
78732	99	4	0	4
78733	24	0	0	3
78734	13	0	0	1
78735	411	18	836	5
78736	139	0	0	0
78738	0	0	0	0
78739	1,126	0	0	0
78741	211	457	1,855	21
78742	78	0	0	3
78744	989	34	1,199	35
78745	477	59	1,198	24
78746	207	5	246	13
78747	772	0	452	0
78748	2,110	3	300	5
78749	1,250	45	1,050	2
78750	478	15	466	1
78751	104	232	177	53
78752	80	33	0	20
78753	366	86	853	5
78754	428	2	1,098	1
78756	41	23	0	40
78757	21	18	0	13
78758	32	2	212	4
78759	366	1	40	7
<b>Totals</b>	<b>15,290</b>	<b>1,712</b>	<b>16,311</b>	<b>661</b>



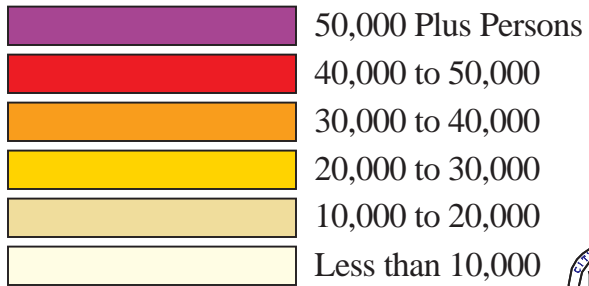
**Single Family Housing Starts  
within the City of Austin  
January 1, 2002 through October 1, 2004.**

 City of Austin  
Jurisdiction  
as of 10.1.2004

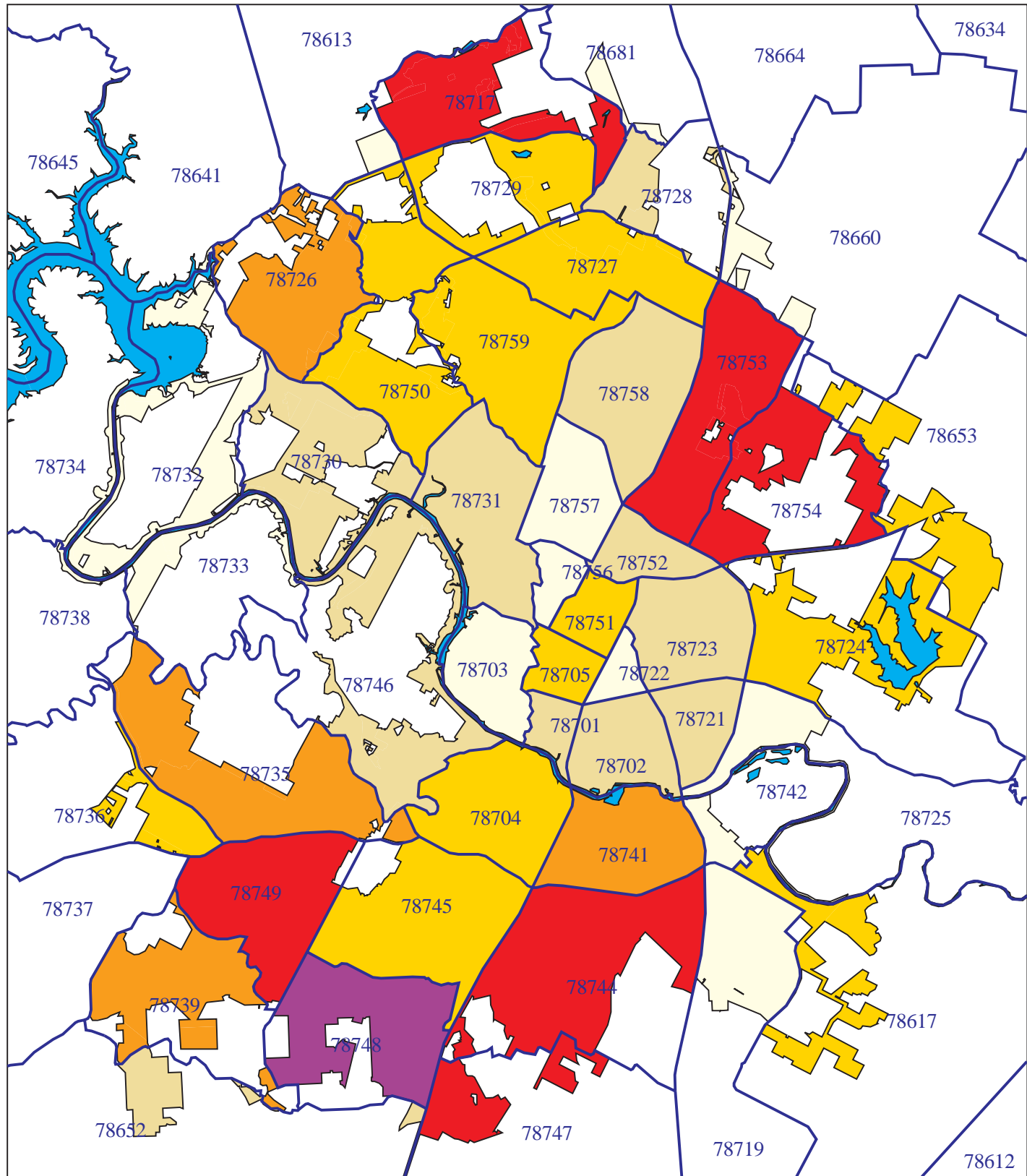




**Total Population  
City of Austin, 2000  
by ZIP Code.**



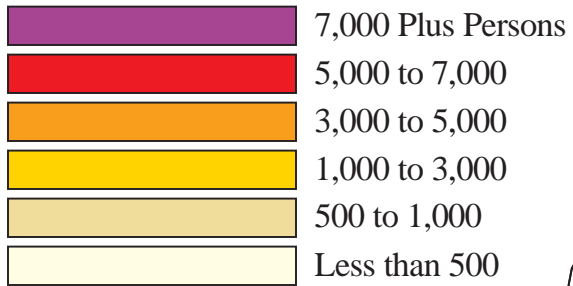
*Produced by: Ryan Robinson, City Demographer, Department of Planning, City of Austin, October 2004.*



# Population Growth

## City of Austin, 2000 to 2010

### Projected by ZIP Code.



Produced by: Ryan Robinson, City Demographer, Department of Planning, City of Austin, October 2004.

